

LANDSCAPE ARCHITECTURE

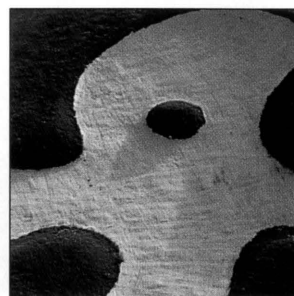
1.6 DIC. 1993



31



38



52



65

COVER STORY

Recreation

48

The Near Future of Play

by John D. Warbach et al.

Current trends hold promise for LAs

52

Desmond Muirhead and the Art of the Golf Course

by John Strawn

An innovative maverick speaks out

60

LA Forum

by J. William Thompson

Can golf courses be environmentally friendly?

65

Mountain Bikers: Gone Gonzo?

by Michael Leccese

Three solutions to trail conflicts

120

Prospect

by Stuart H. Macdonald

Greenways gain from public/private partnerships

TECHNIQUE & PRACTICE

72

Selecting Erosion-Control Fabrics

by John Mack Roberts and James L. Sipes

From geojute to geocells

DEPARTMENTS

14 Letters
22 News
31 Global Landscape

38 Critic-at-Large
77 Product News
78 Buyer's Guide

118 Classifieds
119 Reader Service Index

ON THE COVER: Mill Race Park in Columbus, Indiana, designed by Michael Van Valkenburgh. Photograph by Charles Mayer.

Landscape Architecture (ISSN 0023-8031) is published monthly by the American Society of Landscape Architects, copyright 1993. Second-class postage paid at Washington, DC, and additional mailing offices. SUBSCRIPTIONS: U.S.: \$42/year, \$80/2 years. Canada and foreign surface mail: \$70/year, \$132/2 years. Airmail: \$125/year, \$238/2 years. Students: \$32/year. Single copies \$7. Send U.S. funds to Landscape Architecture, 4401 Connecticut Ave., NW, 5th Floor, Washington, DC 20008-2302. For subscription information or to charge your order, call our toll-free number: (800) 787-LAMS. ASLA members: \$21 of dues is designated for magazine subscription; please direct your inquiries to the Membership Department: (202) 686-2752.

POSTMASTER: Send address changes to Landscape Architecture, 4401 Connecticut Ave., NW, 5th Floor, Washington, DC 20008-2302.